

North

Preliminary Upper Level Floor Plan

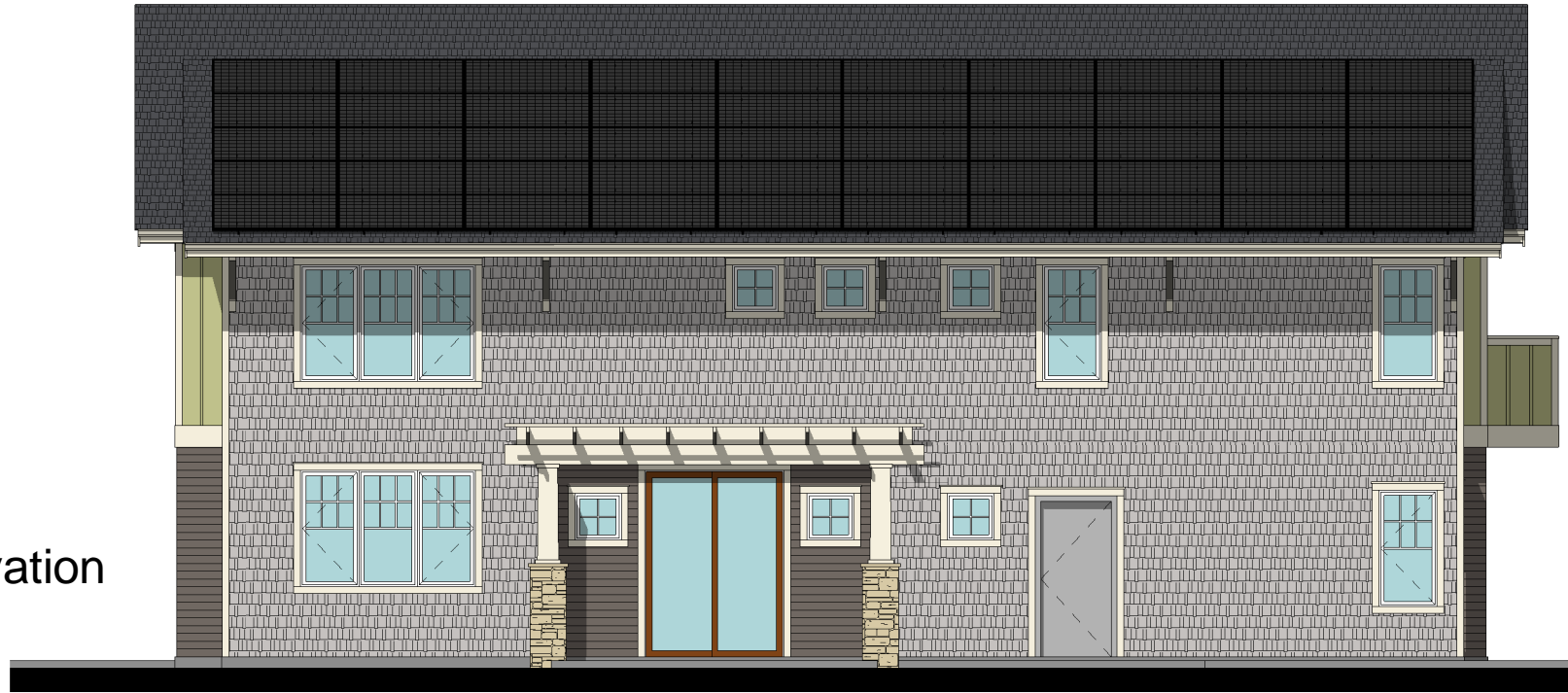
1/8" = 1'-0"

Area Data:

Primary Unit Main Level:	794 sf
Primary Unit Upper Level:	762 sf
Studio Unit:	540 sf
Total:	2096 sf

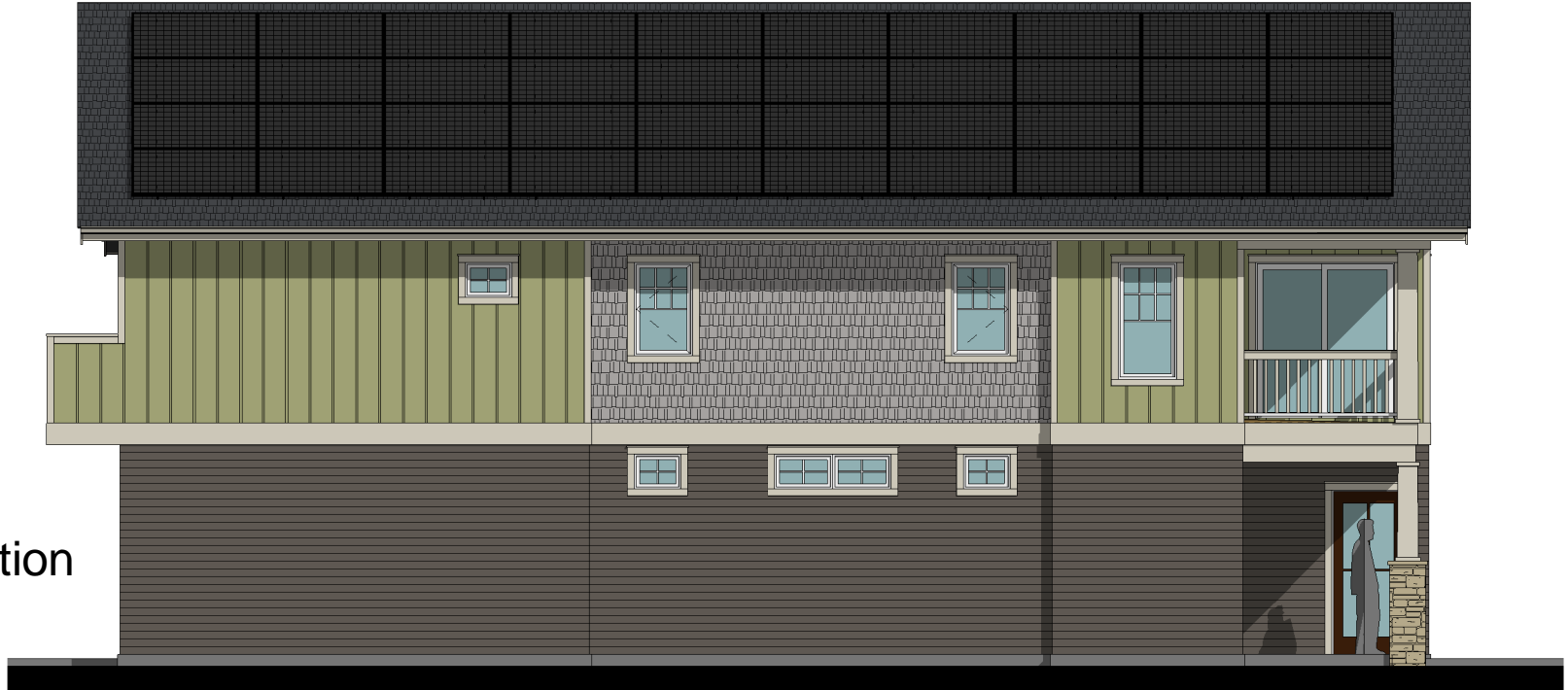
Preliminary Right Side Elevation

1/8" = 1'-0"



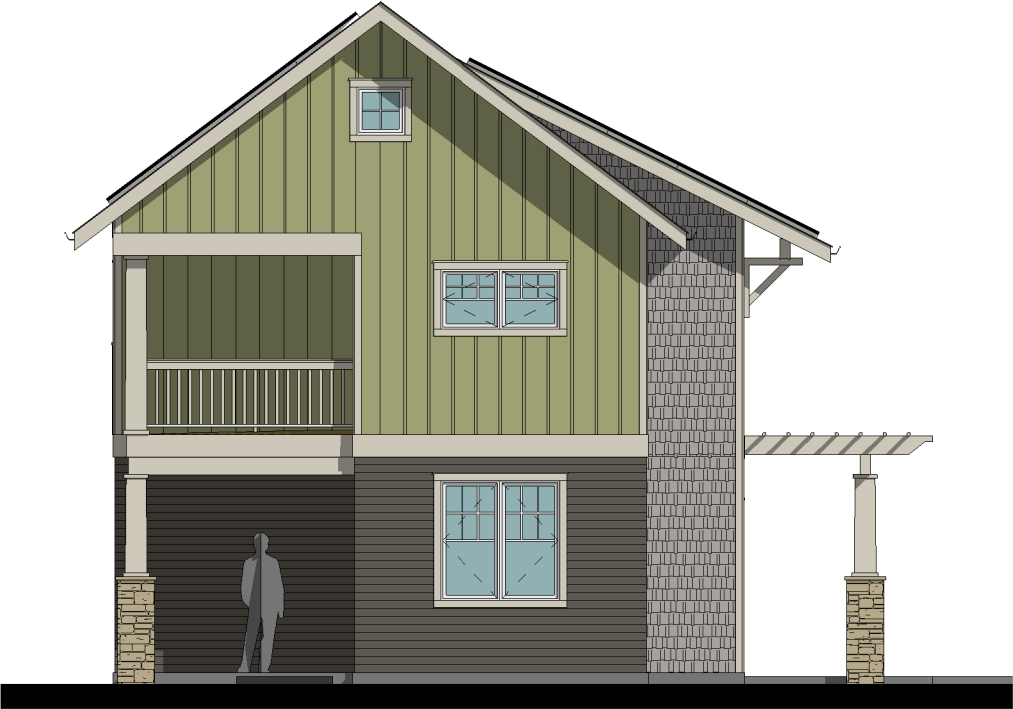
Preliminary Left Side Elevation

1/8" = 1'-0"



Preliminary Front Elevation

1/8" = 1'-0"



Preliminary Rear Elevation

1/8" = 1'-0"

